

KME Italy – Fornaci di Barga Plant



IWCC Technical Seminar 25 ÷ 29 February 2024

- 09.30 - 10.00 Plant presentation**
- 10.00 - 10.20 PPE distribution**
- 10.20 - 10.30 Group photo**
- 10.30 - 12.15 Plant tour (6 sub-groups)**
- 12.15 - 12.30 PPE drop off**
- 12.30 - 13.15 Buffet lunch**
- 13.30 - 13.45 Greetings and departure**





Production Site



Slitting Center



Joint Venture



Headquarter and
Corporate Services



Fornaci di Barga - At a glance



ENGINEERING
COPPER SOLUTIONS

Plant founded in 1915 / Total area ~ 482.000 m², covered ~ 187.000 m² / Length 1,05 km / Width 0,5 km
Full integrated plant specialised in rolled products in BRASS and COPPER. For industrial and building applications.



> 80.000
TON PRODUCTION
2022



100.000
TON
CAPACITY



500
EMPLOYEES

A long history: Fornaci di Barga before the plant building (1915)



A long history: Fornaci di Barga 1916 Inauguration



The Plant Yesterday



ENGINEERING
COPPER SOLUTIONS



The Plant today



ENGINEERING
COPPER SOLUTIONS



The Plant today



ENGINEERING
COPPER SOLUTIONS

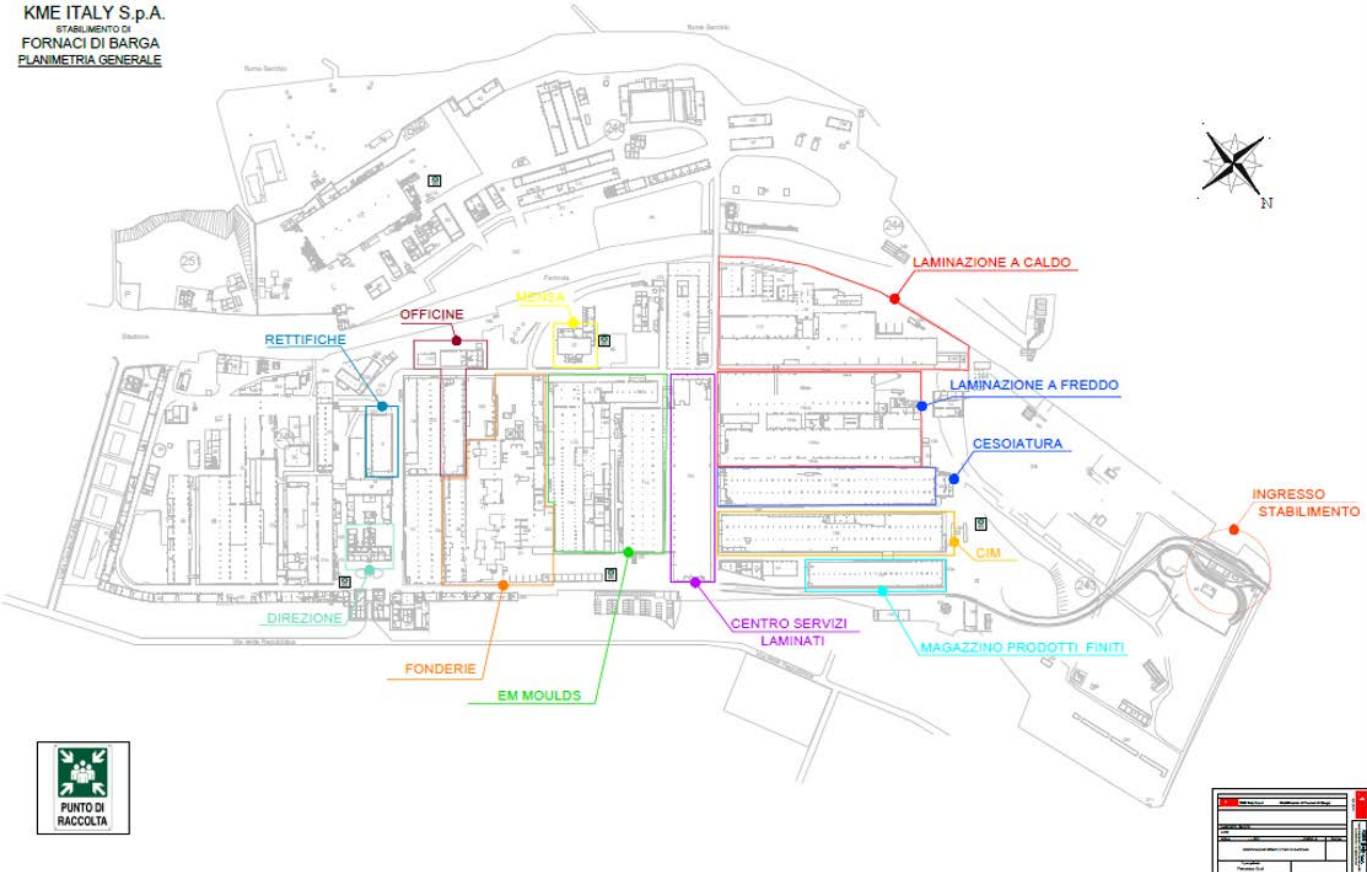


Fornaci di Barga Plant Map



ENGINEERING
COPPER SOLUTIONS

KME ITALY S.p.A.
STABILIMENTO DI
FORNACI DI BARGA
PLANIMETRIA GENERALE



Copper & Brass strips, sheets and discs:

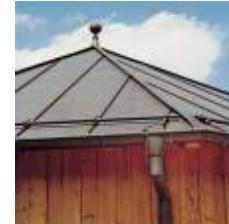
- ❖ Copper for roofing, façades, gutters & rainwater systems
- ❖ Copper & brass for electric and electronic applications (switches, plugs, contacts, connectors etc.)
- ❖ Copper for boiler burners & heat exchangers
- ❖ Copper & brass for gifts articles, bathroom accessories and fancy goods
- ❖ Brass Strips for ammunition



Shanghai – China Yefeis Creative Street



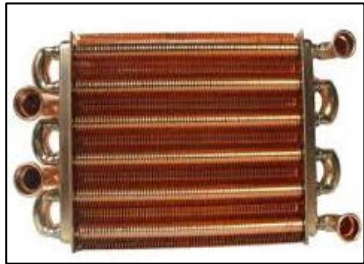
Chelsea Football Club Academy Cobham, UK - Training center



KME Italy - Final Industrial Products



ENGINEERING
COPPER SOLUTIONS



GENERAL INFORMATION

INFORMAZIONI GENERALI



Access to the site area is forbidden to unauthorized persons. All visitors must report Surveillance and register when entering and leaving the site.

L'accesso all'intera area è vietato alle persone non autorizzate. Tutti i visitatori devono presentarsi alla Sorveglianza per essere registrati in entrata e uscita.



No Smoking indoors and outside authorized areas
Vietato fumare nei locali chiusi e al di fuori degli spazi autorizzati



It is forbidden to take photos or videos without authorization.

E' vietato fare foto o video senza permesso.



Please inform KME staff if you wear a pacemaker.
Informare il personale KME se si è portatore di pacemaker.



It is forbidden to use mobile phone inside production areas and while driving

E' vietato utilizzare il cellulare nelle aree produttive e durante la guida

VEHICLES AND PEDESTRIANS

VEICOLI E PEDONI



Pedestrians must always walk on pedestrian walkways and pay attention to vehicles/trucks traffic and possible suspended loads.

I pedoni devono transitare solo sui camminamenti pedonali e prestare attenzione alla circolazione di mezzi di trasporto e alla possibile presenza di carichi sospesi.



Suspended loads

Carichi sospesi

Vehicles and trucks traffic

Circolazione di mezzi industriali

Noise

Rumore

Hot surfaces

Superfici calde

Projected particles

Proiezione di particelle



EMERGENCY PROCEDURE

PROCEDURA DI EMERGENZA



In the event of any emergency, take action without compromising your own and others' safety. Go to the nearest Emergency meeting point and follow the instructions given by the plant staff.

Al verificarsi di una qualsiasi emergenza attivarsi senza compromettere la propria e altrui incolumità. Portarsi al più vicino punto di raccolta e seguire le istruzioni impartite dal personale di stabilimento.

Emergency phone number: +39 0583 701321

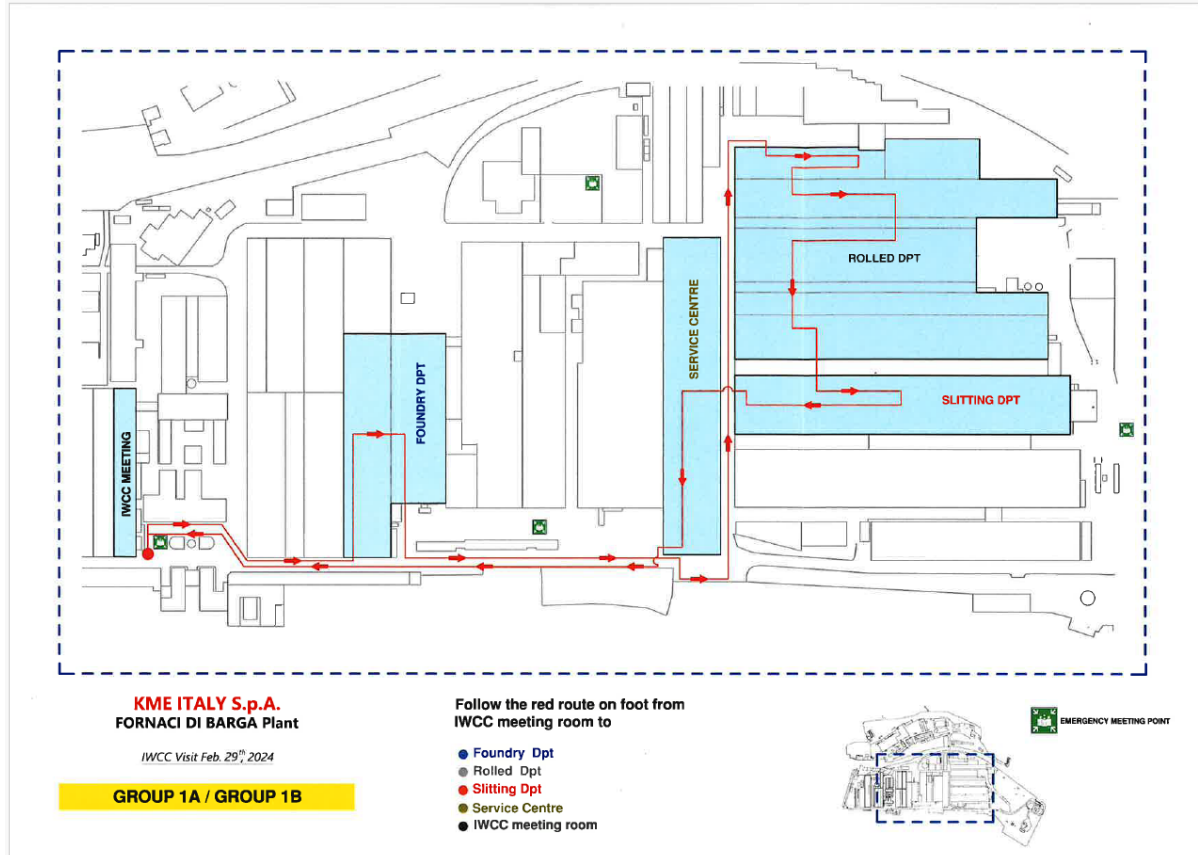


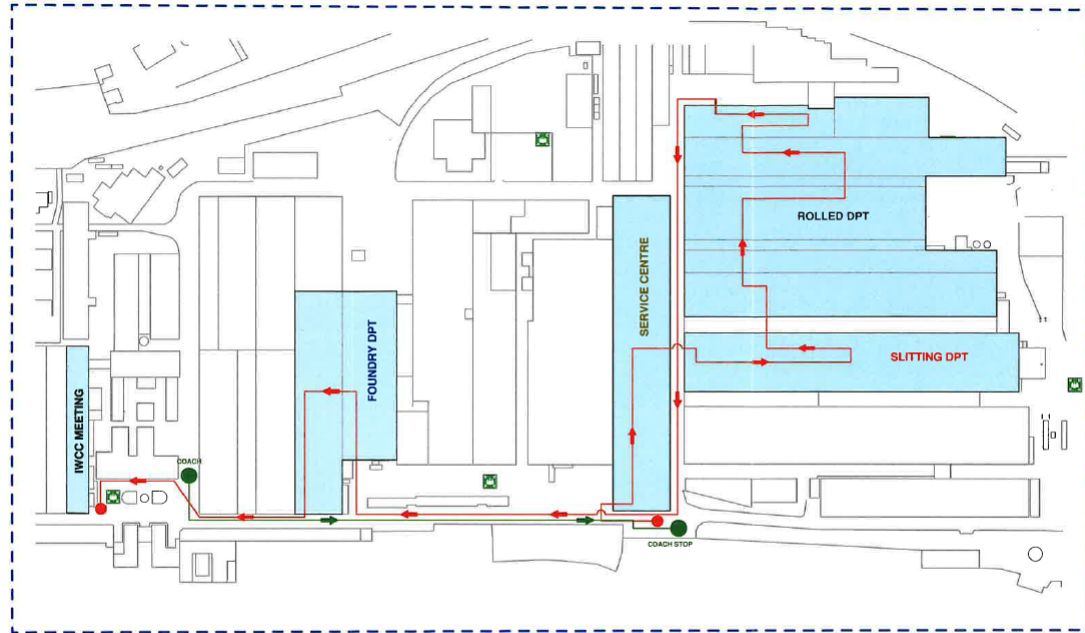
Information for your Health and Safety

GROUP 1A / GROUP 1B

Informazioni per la vostra Salute e Sicurezza

WELCOME
TO FORNACI DI BARGA PLANT
IWCC Visit
29 February 2024





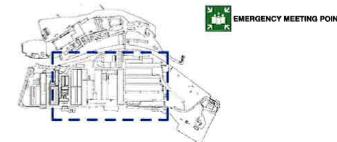
KME ITALY S.p.A.
FORNACI DI BARGA Plant

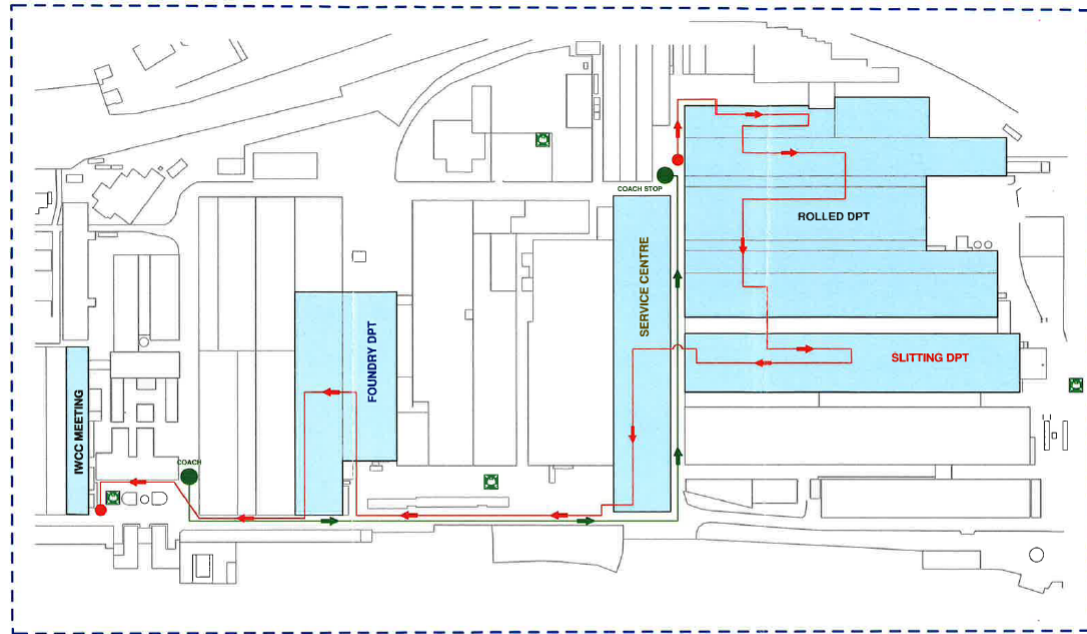
IWCC Visit Feb. 29th 2024

GROUP 2A / GROUP 2B

Follow the green route by coach and
the red route on foot to

- Service Centre
- Slitting Dpt
- Rolled Dpt
- Foundry Dpt
- IWCC meeting room





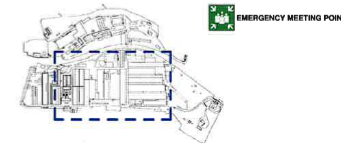
KME ITALY S.p.A.
FORNACI DI BARGA Plant

IWCC Visit Feb. 29th, 2024

GROUP 3A / GROUP 3B

Follow the green route by coach and
the red route on foot to

- Rolled Dpt
- Slitting Dpt
- Service Centre
- Foundry Dpt
- IWCC meeting room



Thanks for your attention