The background of the slide is an abstract, artistic representation of copper tubes. The tubes are shown in various orientations, creating a sense of depth and movement. The lighting is warm, highlighting the metallic sheen and the smooth curves of the pipes. The overall effect is a rich, textured composition in shades of brown, orange, and gold.

Statistics presentation for the
IWCC Copper Tube Committee
19th November 2025 –
Amsterdam

IWCC Legal Disclaimer

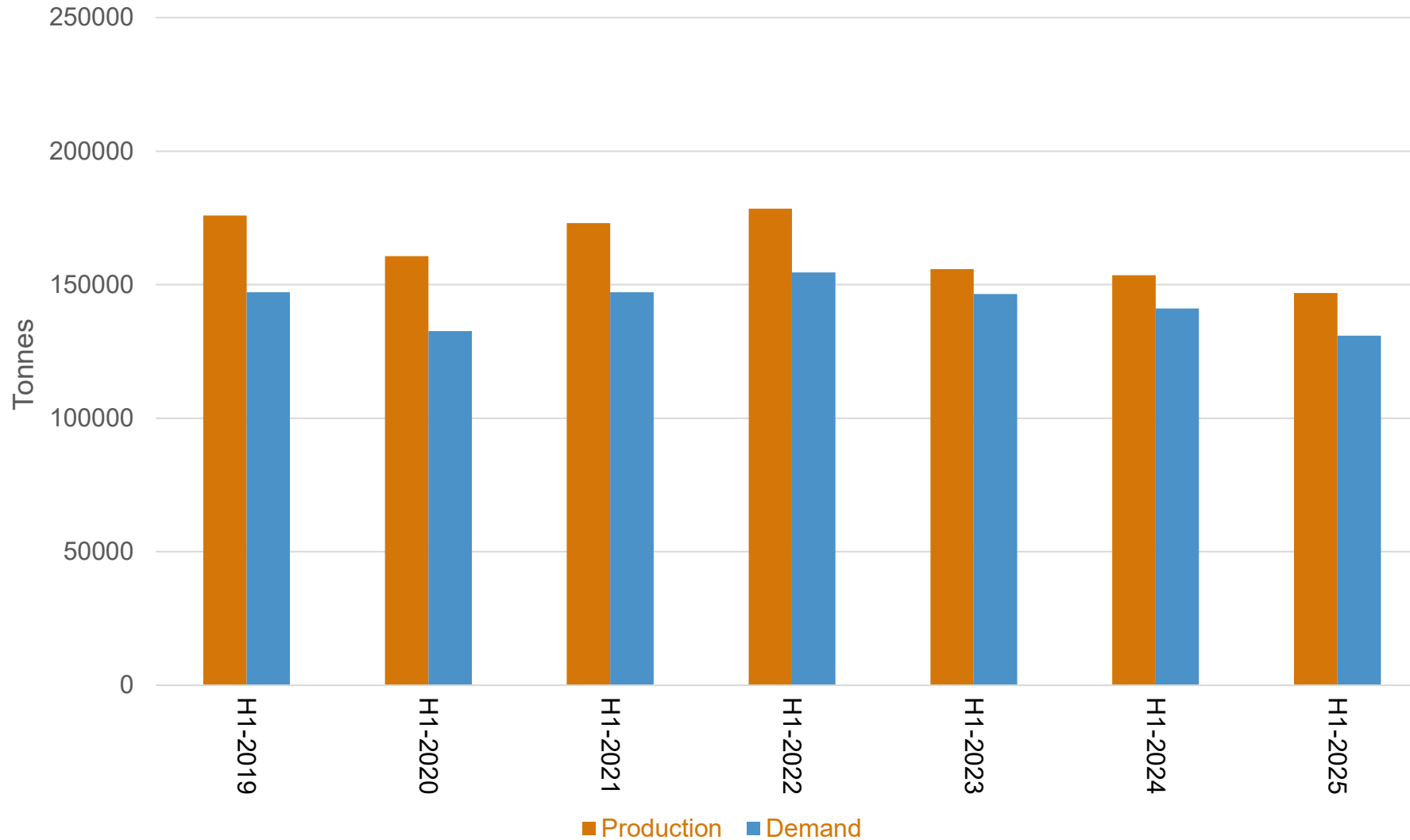
The purpose of the information in this presentation is to guide programmes and provide members and others with information to make independent business decisions.

The IWCC meeting guidelines were distributed to members prior to the meeting. Members present are to confirm they have read, understood and will abide by these guidelines.

All European Production numbers are aggregated to a European total. No individual company production data is shown in these slides.

European Copper Tube Production and Demand

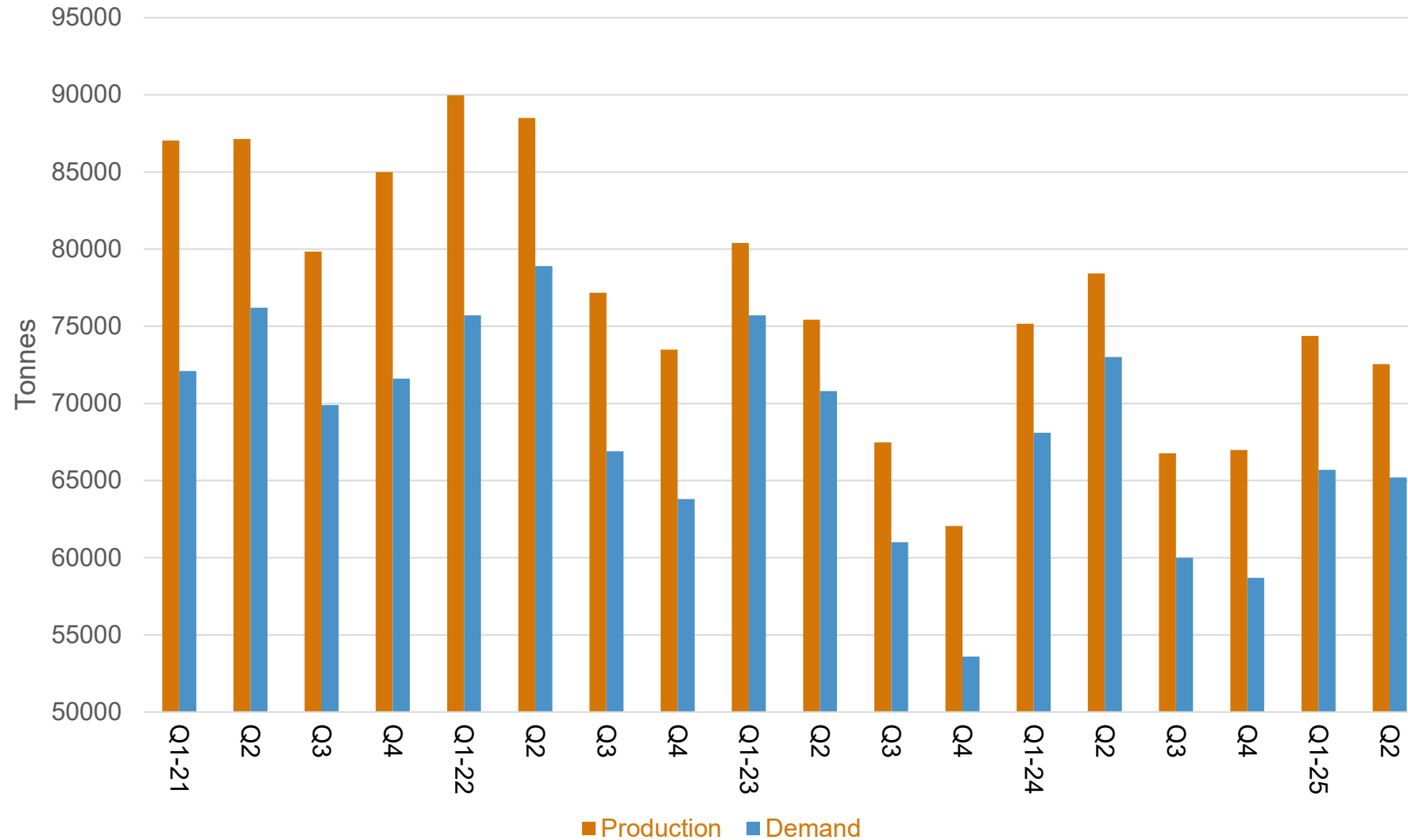
Copper Tube Production & Demand Europe - Annual



Production	
H1-2021	+7.7%
H1-2022	+3.1%
H1-2023	-12.7%
H1-2024	-1.4%
H1-2025	-4.3%

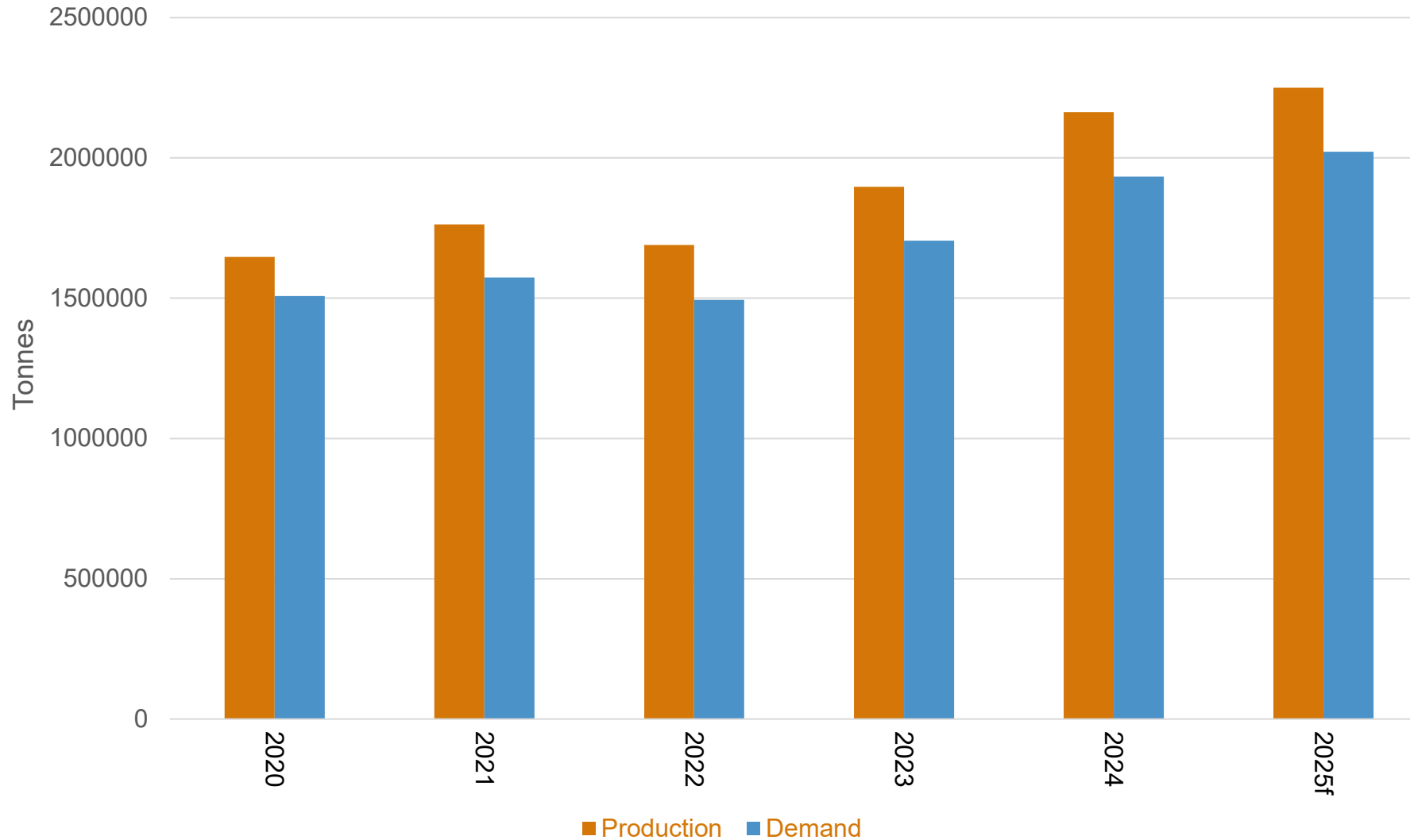
Demand	
H1-2021	+11.0%
H1-2022	+5.0%
H1-2023	-5.2%
H1-2024	-3.7%
H1-2025	-7.2%

Copper Tube Production & Demand Europe – Quarterly



Production	
Q1-24	-6.5%
Q2	+4.0%
Q3	-1.1%
Q4	+7.9%
Q1-25	-1.1%
Q2	-7.5%
Demand	
Q1-24	-10.0%
Q2	+3.1%
Q3	-1.6%
Q4	+9.5%
Q1-25	-3.5%
Q2	-10.7%

Copper Tube Production & Demand China – Annual

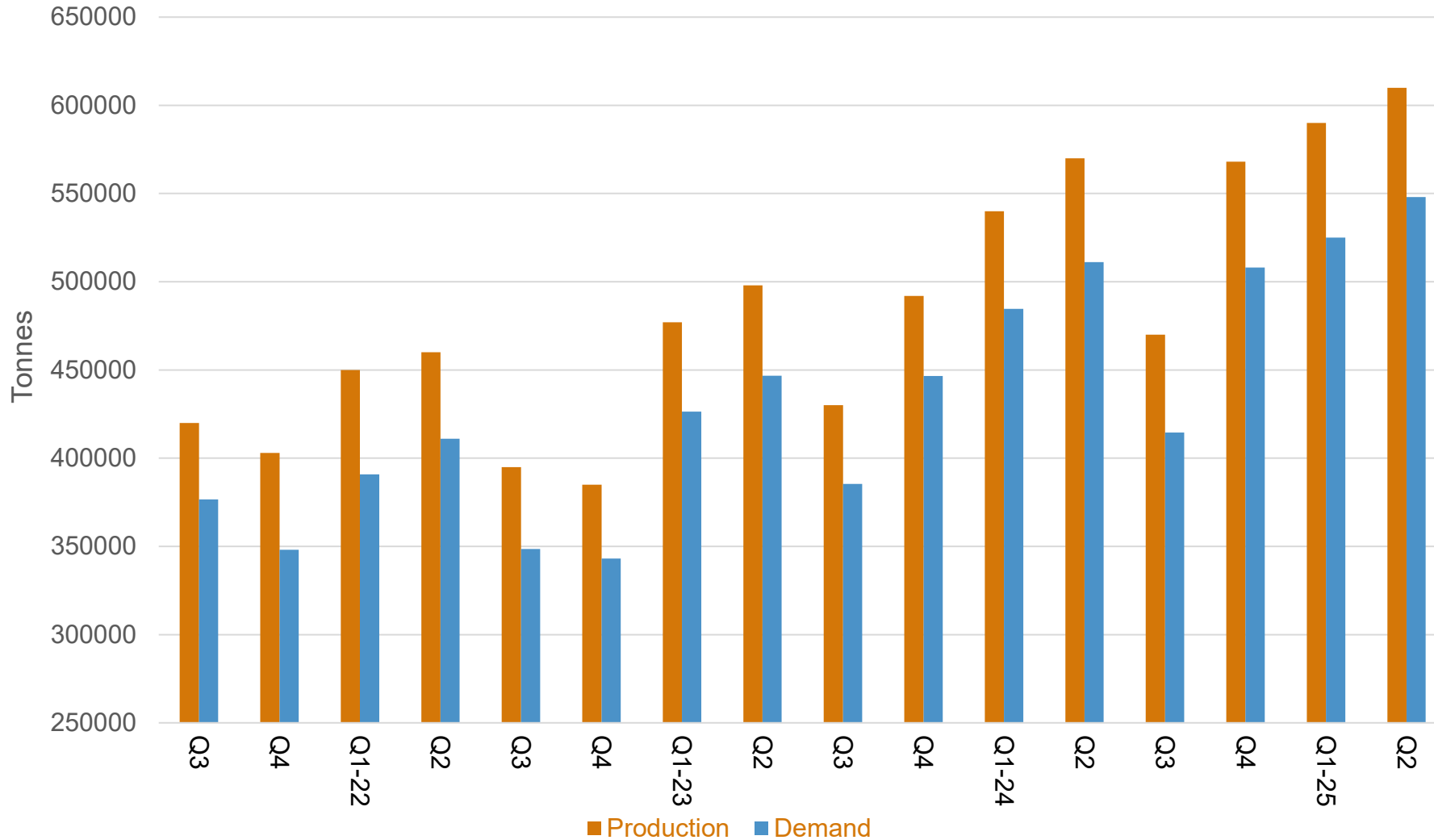


Production	
2021	+7.0%
2022	-4.1%
2023	+12.2%
2024	+14.0%
2025f	+4.0%

Demand	
2021	+4.4%
2022	-5.1%
2023	+14.2%
2024	+13.4%
2025f	+4.6%

2025 forecasted demand has been revised 2% down since March 2025 CTC Vienna meeting.

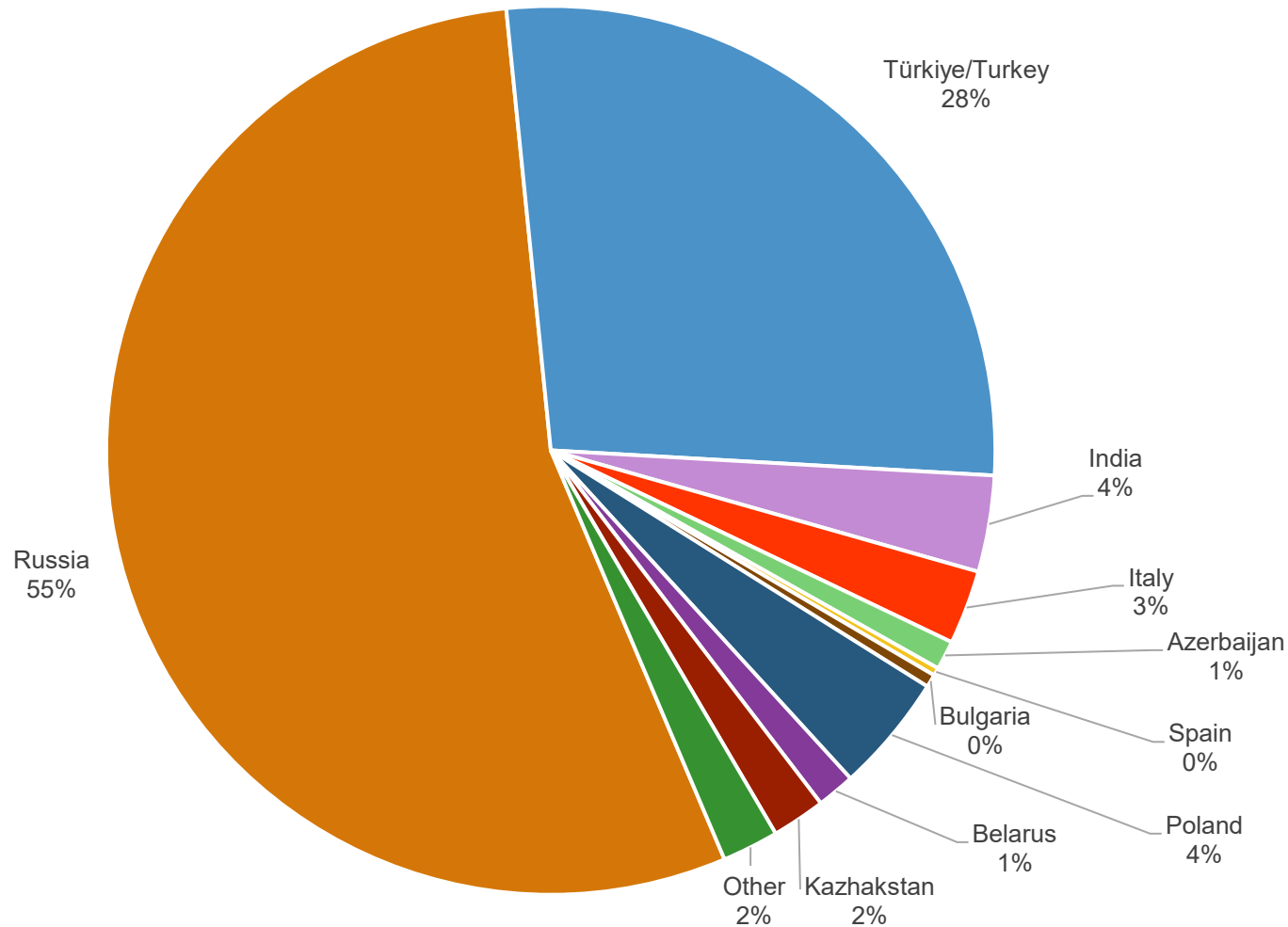
Copper Tube Production & Demand China - Quarterly



Production	
Q1-24	+13.2%
Q2	+14.5%
Q3	+9.3%
Q4	+15.4%
Q1-25	+9.3%
Q2	+7.0%

Demand	
Q1-24	+13.7%
Q2	+14.4%
Q3	+7.5%
Q4	+13.7%
Q1-25	+8.3%
Q2	+7.2%

Uzbekistan Copper Tube Exports by Region H1 2025

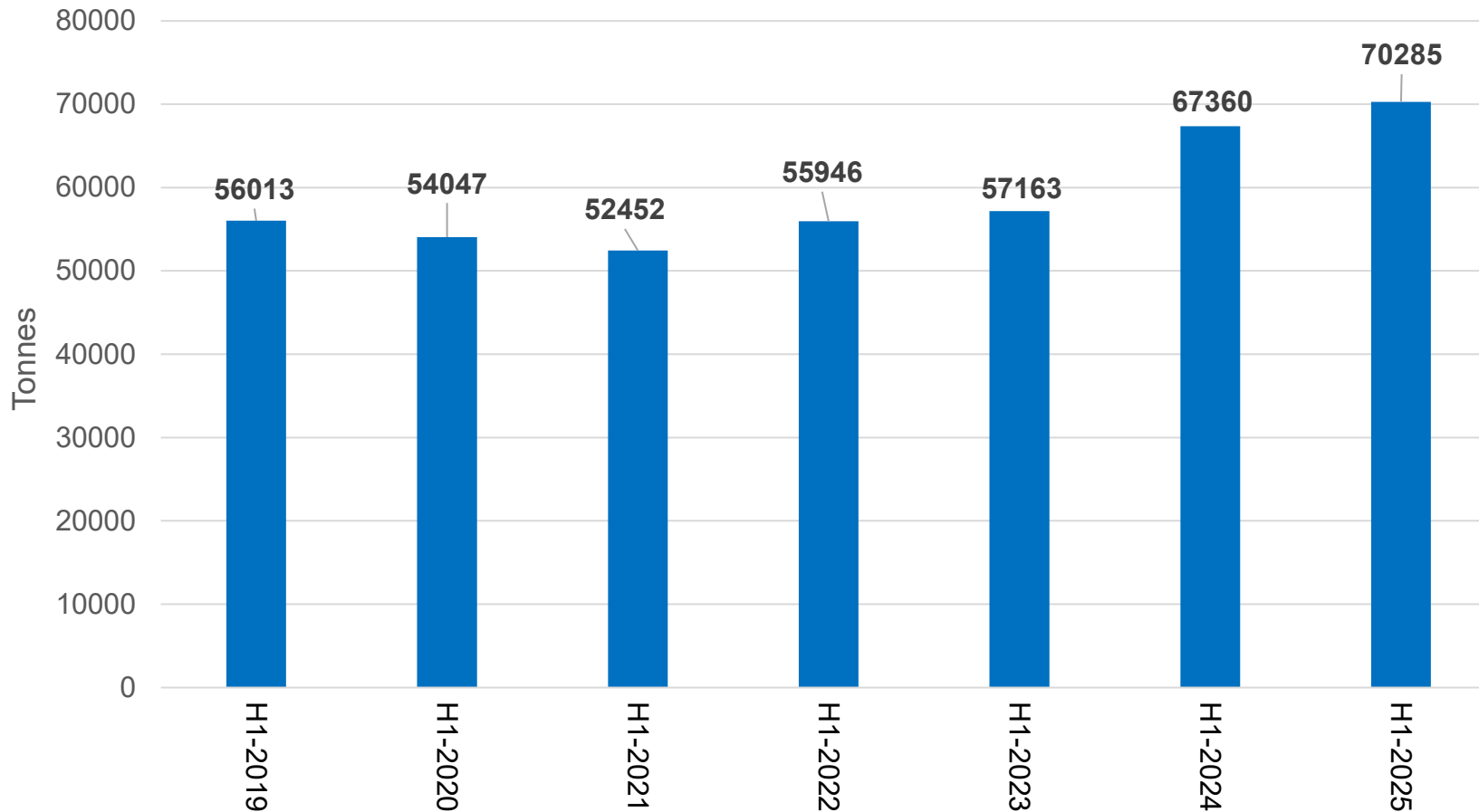


This chart shows the breakdown of Uzbekistan's copper tube exports in Q1 and Q2 2025.

Over half of Uzbekistan's exports of copper tube are to Russia, with 83% to Russia and Turkey.



Vietnam Copper Tube Exports by Region H1 2019 - H1 2025

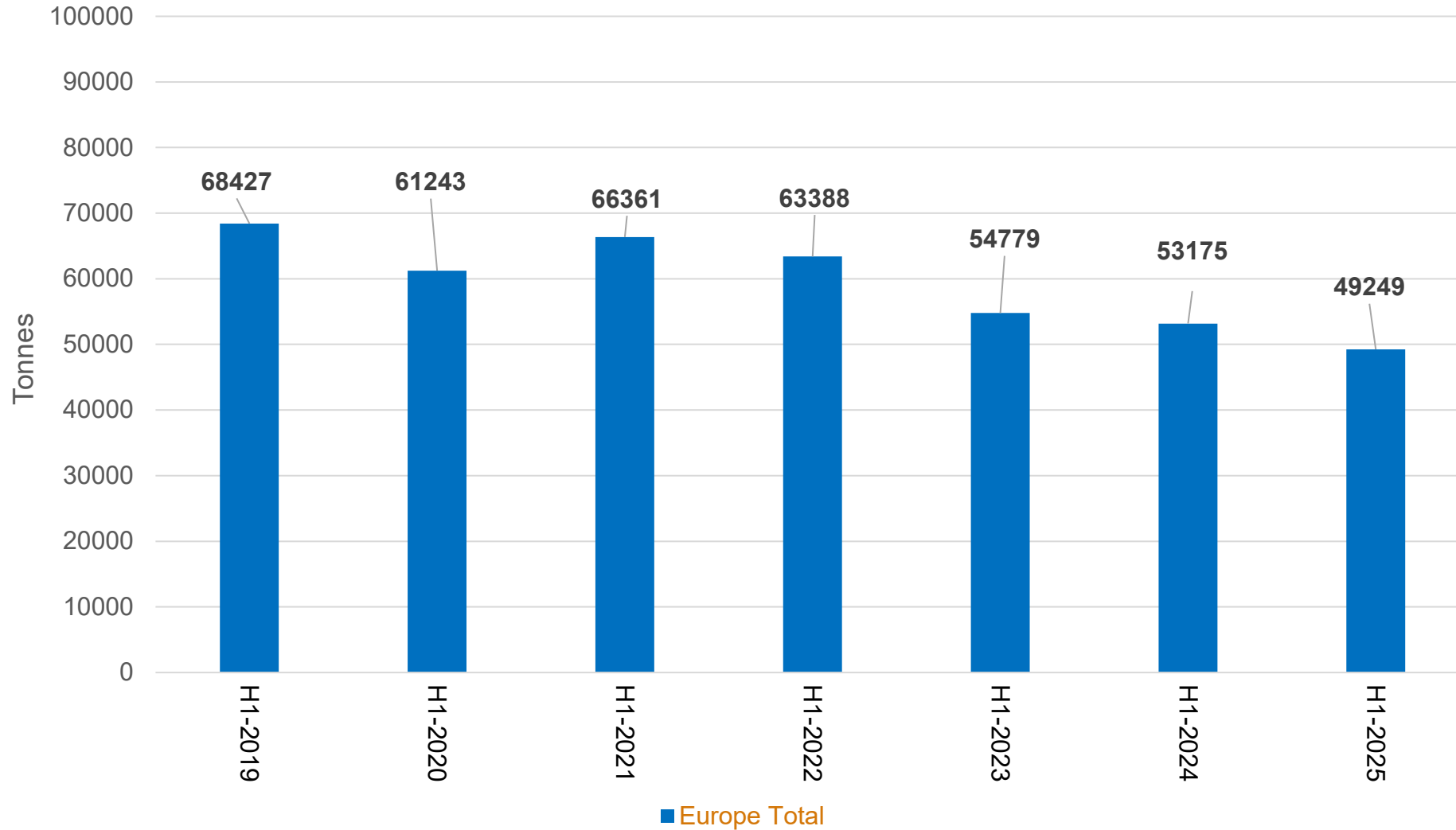


Exports of copper tubes from Vietnam have grown by 26% since 2019.

46% of Vietnam's exports of copper tubes in H1 2025 were exported to India. Italy is the largest European importer of copper tubes from Vietnam, at 4.8% of total exports from Vietnam for the same period.

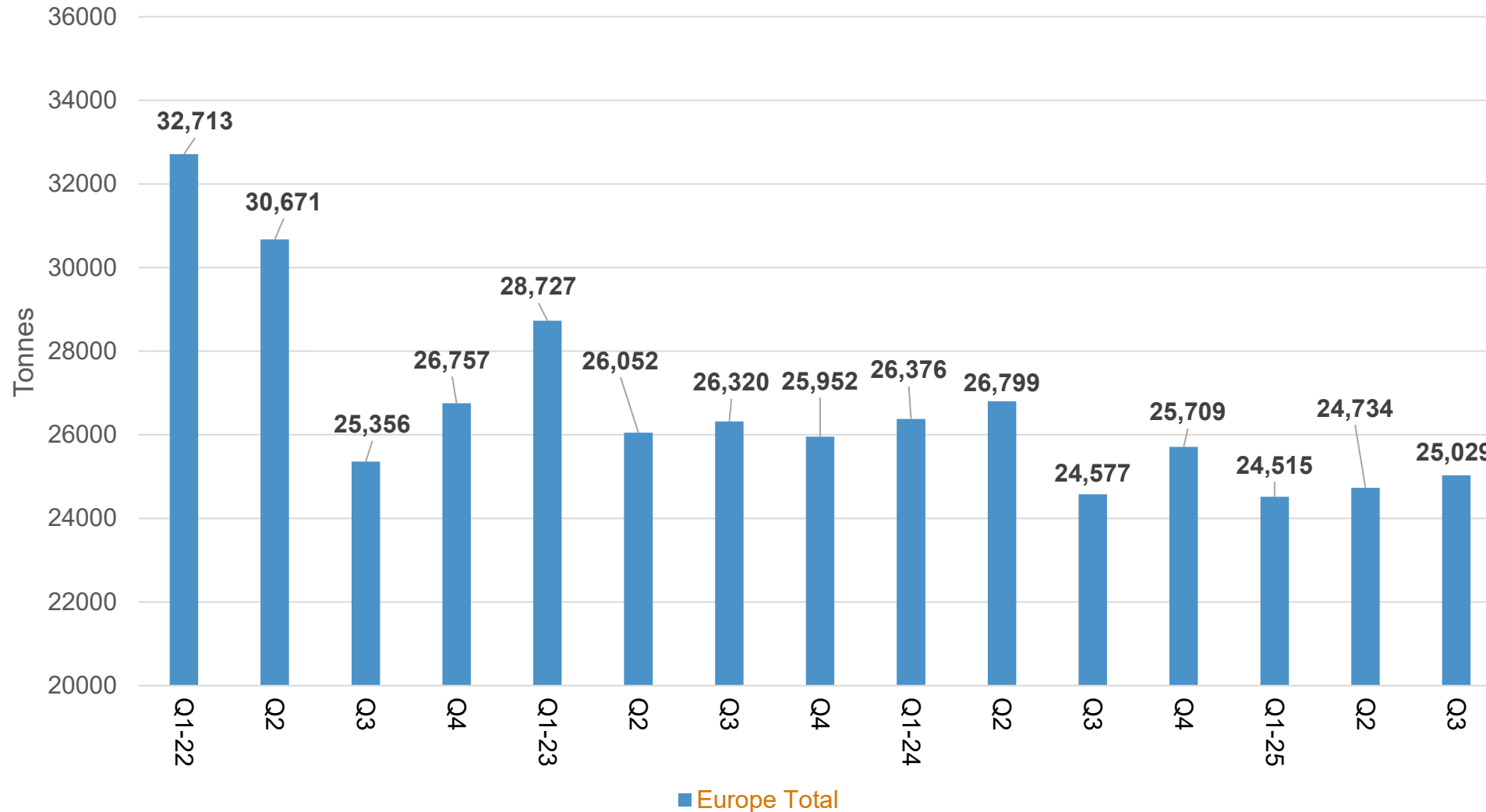
Water Tube Statistics

Copper Water Tube Europe – Annual Demand



Demand	
H1-2020	-10.5%
H1-2021	+8.4%
H1-2022	-4.5%
H1-2023	-13.6%
H1-2024	-2.9%
H1-2025	-7.4%

Copper Water Tube Europe – Quarterly Demand



Demand	
Q3	+3.8%
Q4	-3.0%
Q1-24	-8.2%
Q2	+2.9%
Q3	-6.6%
Q4	-0.9%
Q1-25	-7.1%
Q2	-7.7%
Q3	+1.8%

This chart shows the percentage change of total water tube demand compared to the respective quarter of the previous year. For example, Q3 2025 is compared to Q3 2024.

Copper Water Tube Quarterly Demand

COUNTRY	2023				2024				2025			% Change
	Q1-23	Q2	Q3	Q4	Q1-24	Q2	Q3	Q4	Q1-25	Q2	Q3	Q3 25 vs Q3 24
AUSTRIA	222	271	275	258	232	255	276	296	246	276	251	-9.1%
BENELUX	1224	1123	883	914	1021	1177	889	1016	1224	1083	1107	24.5%
DENMARK	79	54	66	60	75	69	56	55	78	70	94	67.9%
FRANCE	2746	2078	1426	2438	2126	2232	1148	2241	1660	1985	1979	72.4%
GERMANY	4540	4571	4902	4160	4088	4335	4137	3902	3732	3700	3744	-9.5%
GREECE	269	283	267	325	275	237	245	280	220	257	242	-1.2%
IRELAND	253	226	236	215	228	220	244	225	224	232	217	-11.1%
ITALY	3131	3010	2918	3071	2819	2818	2773	2802	2884	2884	2804	1.1%
PORTUGAL	357	158	270	272	281	270	258	256	255	246	232	-10.1%
SCANDINAVIA	1847	1642	1600	2096	1941	2155	1761	1973	1406	1820	1752	-0.5%
SPAIN	1584	1359	1676	1330	1409	1404	1582	1297	1330	1251	1412	-10.7%
UNITED KINGDOM	9143	8245	8378	7481	8953	8539	7841	8117	8205	7914	7875	0.4%
EU-14 + UK	25395	23020	22897	22620	23448	23711	21210	22460	21464	21718	21709	2.4%
CZECH REPUBLIC	895	722	831	771	691	845	717	777	669	798	809	12.8%
HUNGARY	270	157	227	237	194	190	232	254	217	188	249	7.3%
POLAND	1655	1703	1909	1835	1588	1630	1938	1788	1695	1636	1841	-5.0%
SLOVAKIA	108	102	105	96	106	99	85	97	102	91	91	7.1%
OTHER ACCESSION STATES (a)	169	149	135	171	143	115	182	135	149	115	152	-16.5%
TOTAL ACCESSION STATES	3097	2833	3207	3110	2722	2879	3154	3051	2832	2828	3142	-0.4%
NORWAY	169	130	147	154	138	148	143	131	147	121	111	-22.4%
SWITZERLAND	66	69	69	68	68	61	70	67	72	67	67	-4.3%
TOTAL OTHER EUROPE (1)	235	199	216	222	206	209	213	198	219	188	178	-16.4%
GRAND TOTAL (1)	28727	26052	26320	25952	26376	26799	24577	25709	24515	24734	25029	1.8%
n/a - Data suppressed												
2025 Forecast prepared Mar-25												

Copper Water Tube Annual Demand Forecast

	A	BB	BC	BD	BE	BF	BG	BH	BI	BJ	BK
3	COUNTRY	2021		2022		2023		2024		2025F Mar'25 F'Cast	
4	AUSTRIA	962	14.0%	957	-0.5%	1026	7.2%	1059	3.2%	1000	-5.6%
5	BENELUX	4921	-6.0%	4207	-14.5%	4144	-1.5%	4103	-1.0%	3800	-7.4%
7	DENMARK	375	-9.6%	327	-12.8%	259	-20.8%	255	-1.5%	275	7.8%
8	FRANCE	11607	-0.4%	8891	-23.4%	8688	-2.3%	7747	-10.8%	7200	-7.1%
9	GERMANY	23728	-0.8%	19660	-17.1%	18173	-7.6%	16462	-9.4%	15000	-8.9%
10	GREECE	1257	-18.9%	1635	30.1%	1144	-30.0%	1037	-9.4%	900	-13.2%
11	IRELAND	1076	-9.0%	1067	-0.8%	930	-12.8%	917	-1.4%	885	-3.5%
12	ITALY	13056	0.7%	12891	-1.3%	12130	-5.9%	11212	-7.6%	10700	-4.6%
13	PORTUGAL	1488	-1.1%	1436	-3.5%	1057	-26.4%	1065	0.8%	1060	-0.5%
14	SCANDINAVIA	7694	-8.8%	7545	-1.9%	7185	-4.8%	7830	9.0%	7200	-8.0%
15	SPAIN	7546	1.4%	6361	-15.7%	5949	-6.5%	5692	-4.3%	5500	-3.4%
17	UNITED KINGDOM	39562	9.2%	37202	-6.0%	33247	-10.6%	33450	0.6%	32300	-3.4%
18	EU-14 + UK	113272	1.7%	102179	-9.8%	93932	-8.1%	90829	-3.3%	85820	-5.5%
19	CZECH REPUBLIC	3994	3.8%	3323	-16.8%	3219	-3.1%	3030	-5.9%	3150	4.0%
20	HUNGARY	1299	-5.7%	1051	-19.1%	891	-15.2%	870	-2.4%	850	-2.3%
21	POLAND	6474	-17.4%	7016	8.4%	7102	1.2%	6944	-2.2%	6800	-2.1%
22	SLOVAKIA	451	-16.3%	415	-8.0%	411	-1.0%	387	-5.8%	400	3.4%
23	OTHER ACCESSION STATES (a)	595	-7.2%	557	-6.4%	624	12.0%	575	-7.9%	600	4.3%
24	TOTAL ACCESSION STATES	12813	-10.0%	12362	-3.5%	12247	-0.9%	11806	-3.6%	11800	-0.1%
25	NORWAY	707	-4.8%	677	-4.2%	600	-11.4%	560	-6.7%	600	7.1%
26	SWITZERLAND	291	-6.4%	283	-2.7%	272	-3.9%	266	-2.2%	275	3.4%
27	TOTAL OTHER EUROPE	998	-5.3%	960	-3.8%	872	-9.2%	826	-5.3%	875	5.9%
28	GRAND TOTAL	127083	0.3%	115501	-9.1%	107051	-7.3%	103461	-3.4%	98495	-4.8%

These forecasts are aggregated information and estimates and do not directly or indirectly reflect the data of any individual company. Please note that in compliance with the IWCC guidelines, data and estimates discussed are aggregate only and do not directly or indirectly reflect the data of any individual company.

Industrial Tube Statistics

Industrial Tube Demand

INTERNATIONAL WROUGHT COPPER COUNCIL

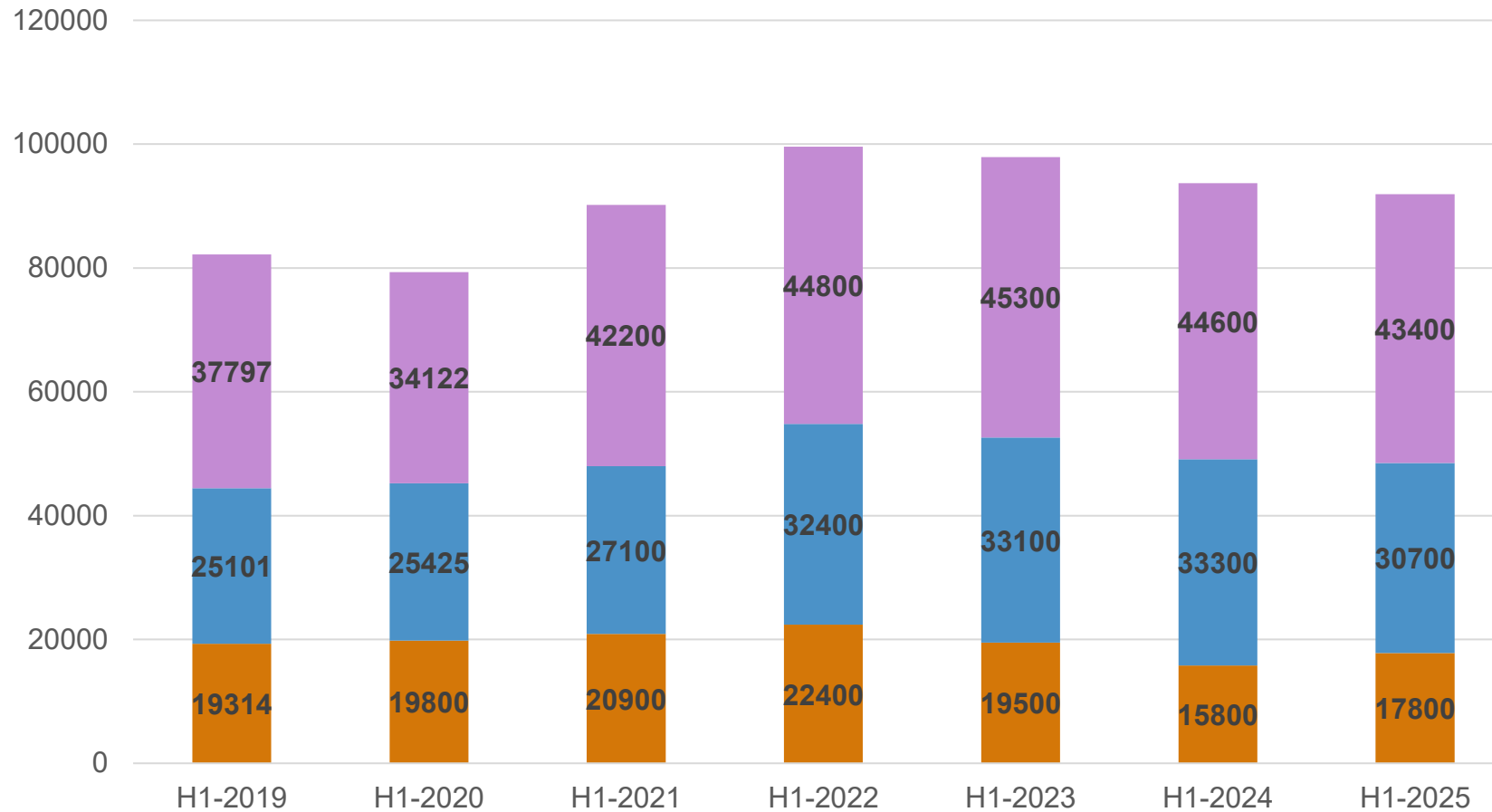
Demand for Industrial Tube

Tonnes

	Annual								Half Yearly								Quarterly						
	2018	2019	2020	2021	2022	2023	2024	% Change 2024 vs 2023	H1-22	H2-22	H1-23	H2-23	H1-24	H2-24	H1-25	% Change H2 2025 vs H2 2024	Q1-24	Q2-24	Q3-24	Q4-24	Q1-25	Q2-25	% Change Q2 2025 vs Q2 2024
	HVAC tube with a wall thickness of equal to or less than 0.5mm	35,318	37,094	37,965	42,900	42,000	32,900	30,800	-6.4%	22,400	19,600	19,500	13,400	15,800	15,000	17,800	12.7%	7,900	7,900	8,000	7,000	8,900	8,900
Refrigeration tube, including tube for medical gases, in: straight lengths, pancake coil and level wound coils	40,050	48,206	49,534	56,500	60,100	49,000	61,100	24.7%	32,400	27,700	33,100	15,900	33,300	27,800	30,700	-7.8%	14,400	18,900	14,400	13,400	14,700	16,000	-15.3%
All other industrial applications, including fittings, filters, cable shoes, solar and geo-thermal applications	67,845	70,485	68,630	81,500	82,600	84,100	80,400	-4.4%	44,800	37,800	45,300	38,800	44,600	35,800	43,400	-2.7%	22,100	22,500	19,700	16,100	22,200	21,200	-5.8%
Totals	143,213	155,785	156,129	180,900	184,700	166,000	172,300	3.8%	99,600	85,100	97,900	68,100	93,700	78,600	91,900	-1.9%	44,400	49,300	42,100	36,500	45,800	46,100	-6.5%
	2018	2019	2020	2021	2022	2023	2024		H1-22	H2-22	H1-23	H2-23	H1-24	H2-24	H1-25		Q1-24	Q2-24	Q3-24	Q4-24	Q1-25	Q2-25	
HVAC tube with a wall thickness of equal to or less than 0.5mm	24.7	23.8	24.3	23.7	22.7	19.8	17.9		22.5	23.0	19.9	19.7	16.9	19.1	19.4		17.8	16.0	19.0	19.2	19.4	19.3	
Refrigeration tube, including tube for medical gases, in: straight lengths, pancake coil and level wound coils	28.0	30.9	31.7	31.2	32.5	29.5	35.5		32.5	32.5	33.8	23.3	35.5	35.4	33.4		32.4	38.3	34.2	36.7	32.1	34.7	
All other industrial applications, including fittings, filters, cable shoes, solar and geo-thermal applications	47.4	45.2	44.0	45.1	44.7	50.7	46.7		45.0	44.4	46.3	57.0	47.6	45.5	47.2		49.8	45.6	46.8	44.1	48.5	46.0	
Totals	100.0	100.0	100.0	100.0	100.0	100.0	100.0		100.0	100.0	100.0	100.0	100.0	100.0	100.0		100.0	100.0	100.0	100.0	100.0	100.0	

- Notes:
1. Includes estimates for non-reporting companies
 2. Sum of Industrial + water tube equals total copper tube demand (using definition 'b')
 3. Definition b: sum of all countries

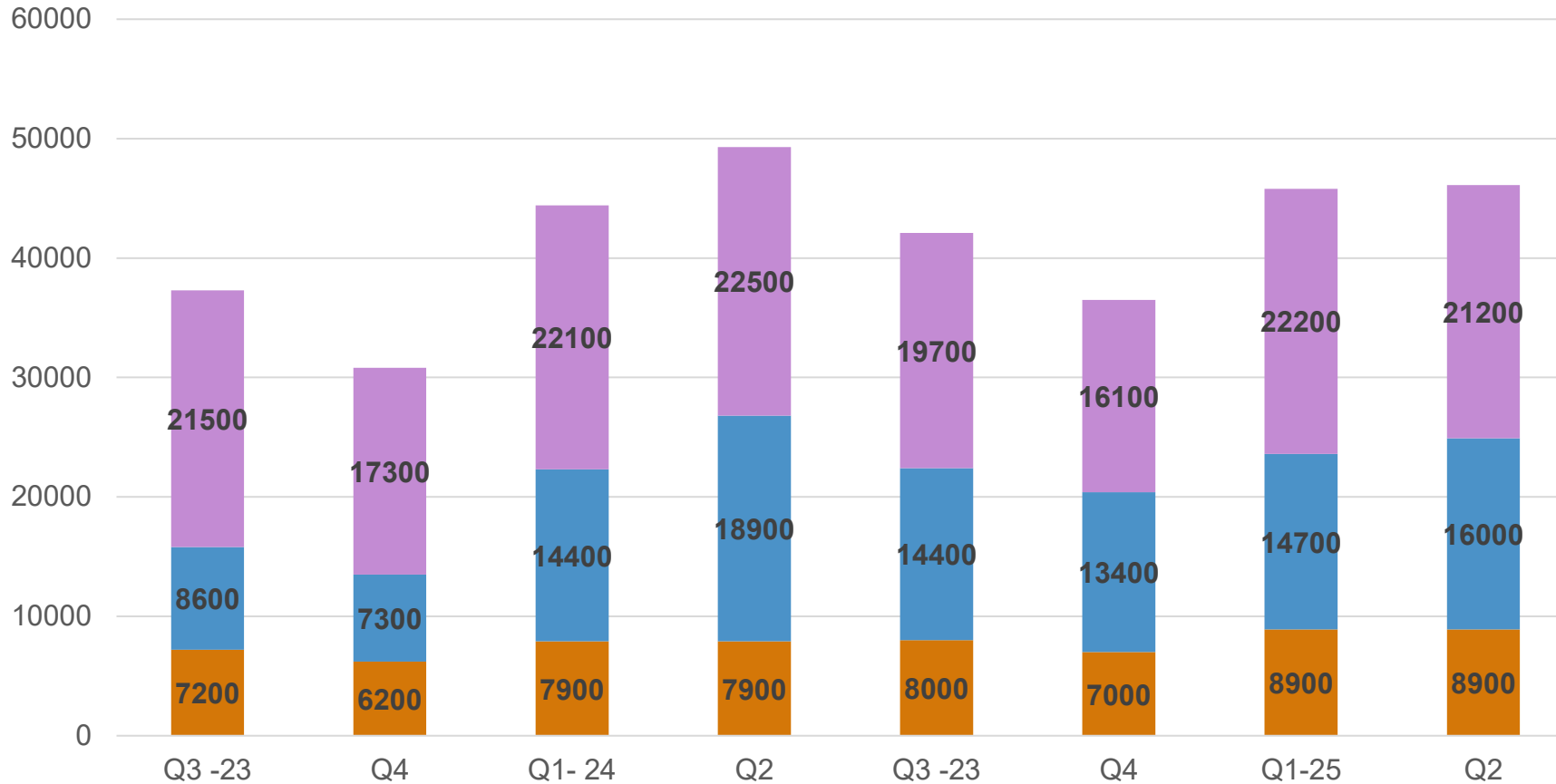
Industrial Tube Demand H1 2019-2025



- All other industrial applications, including fittings, filters, cable shoes, solar geo-thermal applications
- Refrigeration tube, including tube for medical gas, in: straight lengths, pancake coil and level wound coils
- HVAC tube with a wall thickness of equal to or less than 0.5mm

Year	% Change
H1-2019	+9.9%
H1-2020	-3.5%
H1-2021	+13.7%
H1-2022	+10.4%
H1-2023	-1.7%
H1-2024	-4.3%
H1-2025	-1.9%

Industrial Tube Demand – Quarterly

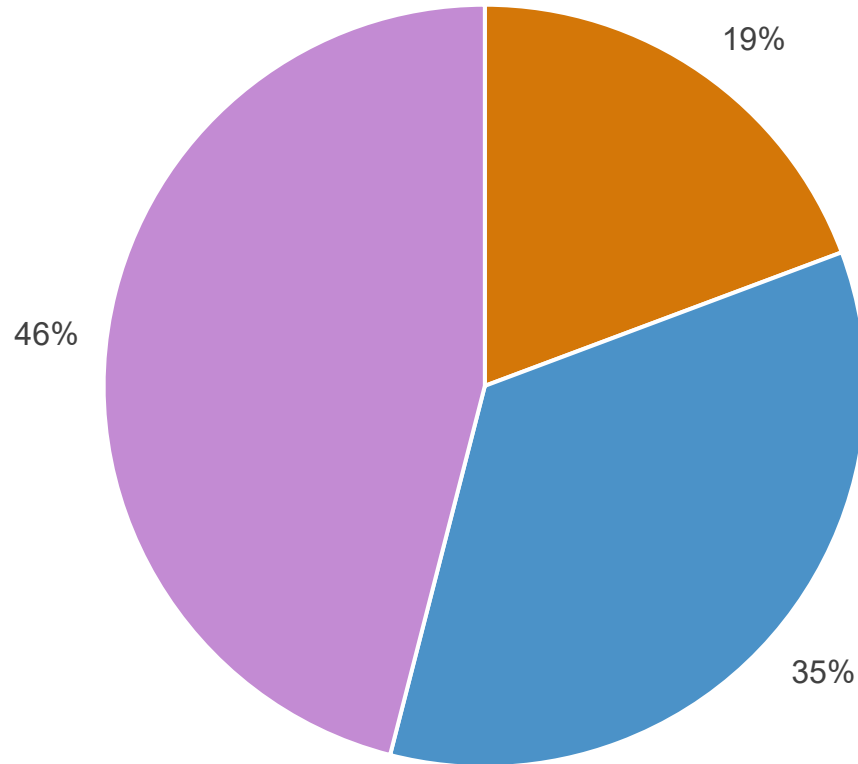


- All other industrial applications, including fittings, filters, cable shoes, solar geo-thermal applications
- Refrigeration tube, including tube for medical gas, in: straight lengths, pancake coil and level wound coils
- HVAC tube with a wall thickness of equal to or less than 0.5mm

Year	% Change
Q1-24	-9.4%
Q2	+0.8%
Q3	+12.9%
Q4	+18.5%
Q1-25	+3.2%
Q2	-6.5%

This chart shows the percentage change of total industrial tube demand compared to the respective quarter of the previous year. For example, Q4 2024 is compared to Q4 2023.

Industrial Tube Demand Breakdown By Product – Q2 2025



- HVAC tube with a wall thickness of equal to or less than 0.5mm
- Refrigeration tube, including tube for medical gases, in: straight lengths, pancake coil and level wound coils
- All other industrial applications, including fittings, filters, cable shoes, solar and geo-thermal applications

This graph shows the breakdown of industrial tube demand by product type: HVAC, refrigeration and other.

HVAC tube now makes up 19% of total industrial tube demand. This represents a 2% YoY share growth and 4% growth since Q2 2023.

Refrigeration tube share of total industrial tube demand was 38% in Q2 2024. In Q2 2025, it has dropped to 35%.



Thank You